



AUT

OUR SUSTAINABILITY PLAN:

A companion document to the
AUT Sustainability Roadmap to 2025

OUR SUSTAINABILITY MISSION

Great graduates for a
sustainable world

OCTOBER 2018

CONTENTS

1. Our commitment to sustainability	03
2. The voice of our students	08
3. Summary of targets	09
4. Theme 1: Creating exceptional learning experiences	10
5. Theme 2: Discovery and application of knowledge for wellbeing and prosperity	12
6. Theme 3: Responding to our place in the world	14
7. Theme 4: Building our position as New Zealand's university of technology	16
8. Theme 5: Being a place where people love to work and learn	18



1. OUR COMMITMENT TO SUSTAINABILITY

Tāwhaitia te ara o te tika, te pono me te aroha, kia piki ki te taumata tiketike

Follow the path of integrity, respect and compassion; scale the heights of achievement

AUT Directions lays out the University's mission and the key areas of focus for the coming years to 2025. Sustainability is embedded throughout AUT Directions and is contextualised by AUT's commitment – and the New Zealand government's commitment – to the United Nations' Sustainable Development Goals (SDGs, Agenda 2030). These call on all countries to end poverty, protect the planet, and ensure prosperity for all. The SDGs include actions related to climate change, poverty reduction, gender equality, quality education, sustainable cities and communities, and protection of life on land and below water. Each goal has specific and measurable targets to achieve.

As a university, we are aware we have a specific contribution to make – through research, enquiry, analysis, discourse and debate, and through developing curiosity, critical thinking, and creative innovation in our students, acting on the understanding that all our graduates will be global as well as national citizens. We have a role in contributing to inclusive, public debate about the SDGs and, through collaboration, supporting positive change, organisationally and nationally.

We live now in a time in which humans have degraded the planet to a dangerous level. A sixth mass extinction event is in progress caused largely by our way of production and harvesting. A rapid depletion of biodiversity will affect ecosystems services and food webs with related failures in the ecosystems we rely upon. Global warming, resultant from our current carbon-based economy, puts further pressure on climate-sensitive ecological niches. The speed at which we transition to a zero-carbon economy will determine how many millions are affected by storm-related surge or flooding events or sea-level rise. Our Oceanic region, with its big ocean/small island nations and coastal mega-cities, is already experiencing the damaging outcomes.

AUT'S SUSTAINABILITY VISION

AUT is committed to advancing knowledge and understanding of the issues and opportunities around creating a sustainable future for people and the planet and its biological ecosystems.

Our sustainability vision encompasses three core values, which apply and intersect across all areas of our activities. They are:

Mauri ora | Wellbeing

Wellbeing is understood here in an expanded sense as we recognise that human wellbeing is dependent upon the wellbeing of the planet, and the web of life that supports and resources our endeavours. Actions and initiatives in this area include collaborations with key stakeholders in wellbeing initiatives as well as discovery processes around equity, ethics, and civics.

This focus area links to multiple SDGs including no poverty, gender equality, good health and wellbeing, reduced inequalities as well as peace, justice and strong institutions.



Ki Tua | Futures

Viable futures are inherent to sustainability and so a future thinking for wellbeing and prosperity is key. Actions and initiatives in this area include speculative or disruptive technologies and systems.

This focus area links to a number of SDGs including climate change action as well as industry, innovation and infrastructures.



Whanaungatanga | Connectivity

The wellbeing of planet and people is enabled by complex global systems, which connect across diverse regions, areas and functions. Actions and initiatives in this area include biodiversity conservation that encompasses socio-ecological perspectives, exploration of local and global ecosystem processes, investigation into ecologically responsible industries, and urban systems as well as infrastructures.

This focus area links to multiple SDGs including life below water, life on land, sustainable cities and communities, and responsible consumption and production.



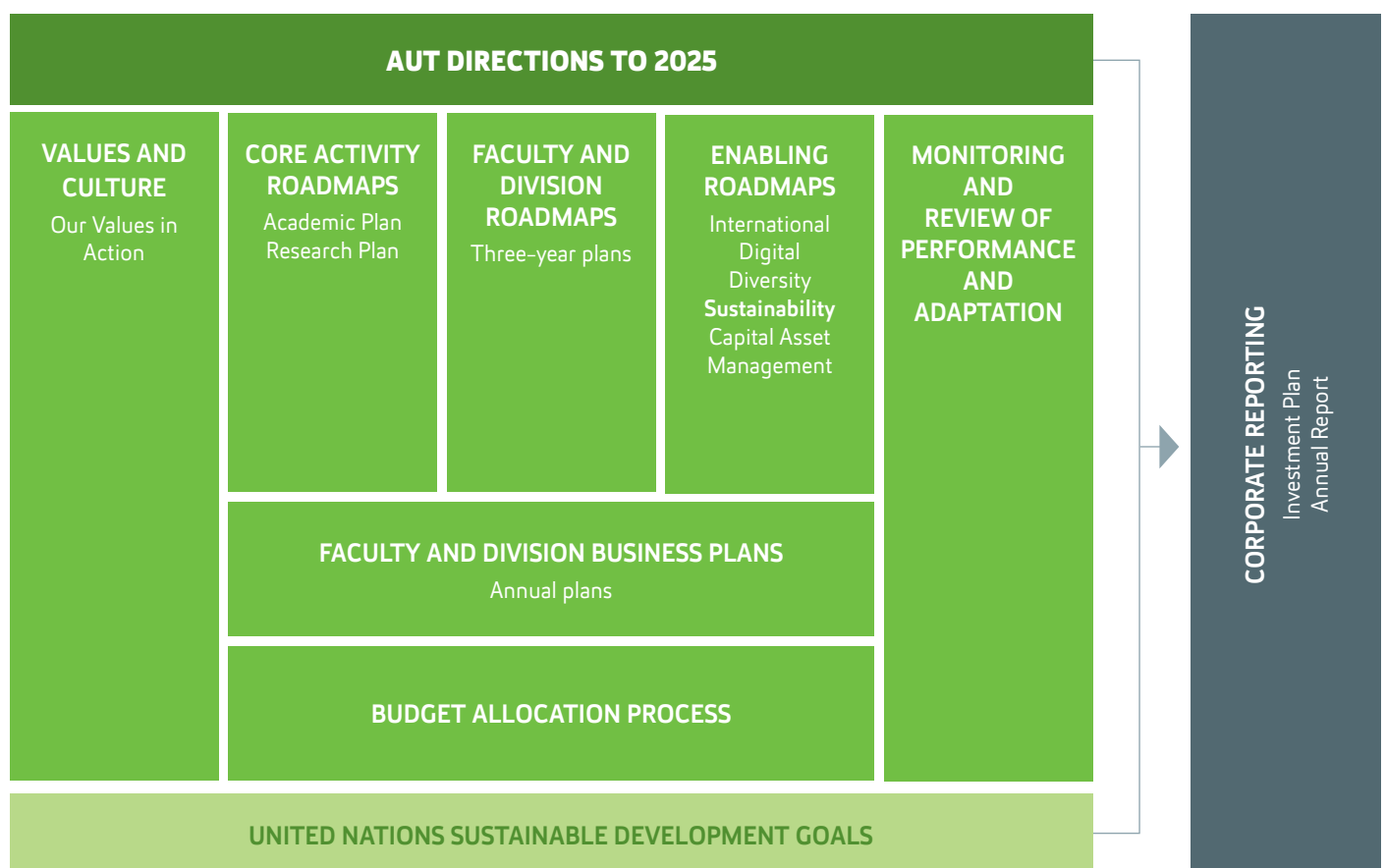


Te Manu Tāwhiowhio | The Navigation Bird is a sculpture on the AUT City Campus symbolising nature and our role as navigator of our students and staff, recognising the complex nature of interactions between natural and human systems.

STRATEGIC ALIGNMENT

The following diagram represents the strategic framework for AUT Directions depicting the relationships between AUT's various plans. The Sustainability Roadmap is one of the University's enabling plans and is underpinned and enacted through Faculty and Division Roadmaps and the annual business planning process.

This companion document to the AUT Sustainability Roadmap provides greater detail about the context for sustainability activities at AUT, and the objectives, actions and targets that we are aiming to achieve by 2025.



OUR SUSTAINABILITY RESPONSIBILITIES

We are collectively committed to:

- Ensuring all our students have opportunities to develop sustainability related knowledge and understanding of the effective and innovative application of solutions in their fields of endeavour.
- Contributing to the 17 United Nations Sustainable Development Goals, to inclusive public discussion and debate about these goals, and to positive change – organisationally and nationally.
- Reducing our carbon footprint towards net zero greenhouse gas emissions (from buildings, travel, energy and waste).
- Working with others, locally, nationally, and internationally, recognising that while sustainability is a global goal, its problems and solutions are situated in local ecosystems and communities.
- Assessing our progress through setting targets, monitoring and reporting against the Sustainability Roadmap.

At AUT, everyone is encouraged to enhance the sustainability of the University and opportunities are provided to do so. The formal responsibility rests with the various academic and organisational units, and sustainability will be embedded within school, faculty, and division plans. The Vice-Chancellor's Taskforce for Sustainability advises on goal setting, planning and monitoring.

HOW THIS PLAN IS STRUCTURED

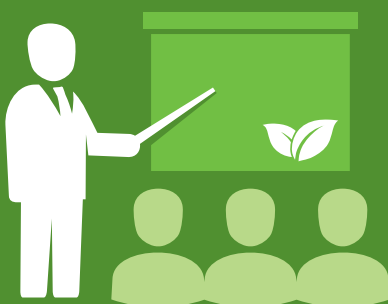
Waiata as a cultural platform for voice and vision has been adopted to frame the five themes of AUT Directions. Inspired by the aforementioned 'Manu Tāwhiowhio' sculpture, the waiata Taku manu tāwhiowhio sings about staff and students of AUT navigating the challenges and opportunities life presents. The waiata makes connections to local geographical landmarks reaffirming our connection and commitment to the land upon which the AUT City Campus is located.

This Sustainability Plan is structured under the same themes as AUT Directions and is organised in the following way:

Objectives – this is what we are aiming to achieve

Example Actions – these are examples of actions which will help us achieve our objectives. They are supplied to provide ideas and guidance to staff and students, as they individually and collectively (as part of faculties and divisions) decide on the actions they will take to contribute to sustainability at AUT.

Targets – these are the indicators of progress



Facilitate sustainability based learning and teaching symposiums, forums and workshops.



NET ZERO
CARBON BY 2035

2. THE VOICE OF OUR STUDENTS

Dear reader,

We want to start this letter by asking you to do something a little crazy. We want you to connect to a time when you thought anything was possible. That people could solve even the most complex challenges if we just put our minds together and collectively realised our power.

That the world can be as beautiful as we dream it to be.

Now, imagine a world that governs with all people, future generations and our planet at heart. Imagine a society built on compassion, where every person feels the rewards of community and connection.

This is the future that we wish to create with AUT.

We could write to you about the challenges of our time, that humanity is facing a pivotal moment in history. We know that what we do today will affect not only our own quality of life but the life of all future generations. That pollution, soil degradation, social inequities, and climate change need to be addressed today, not tomorrow. But, we already know the facts. **What we want to write to you about is the opportunity to co-create a legacy.**

A legacy can mean many things. For us, a legacy for our university means that each person within it has the ability to connect to something far greater than each of us.

It means the AUT experience leaves students entering the world with hope and excitement at the challenge of shaping it, having left from AUT thinking that anything is possible.

We look to AUT to expand our capacity to understand thoroughly, act purposefully and empathise deeply. We wish to see our university leading by example, from every lecture, to the running of the grounds and facilities, and at the core of each decision making process.

A better future for us is where...

- AUT is representative of the community to which it serves, having cross-discipline student representation on sustainability outcomes. Transparency will allow students to easily monitor progress towards goals and hold higher staff to account.
- AUT boldly moves towards long-term investments that put people and planet first.
- Staff and students are given the platform to raise important conversations around sustainability and support each other in adopting new behaviours.
- Staff and students are supported to put forth creative ideas to speed progress and create learning opportunities.
- Students are well supported to collaborate, inspire and empower other students to see their unique part of the solution.

We applaud AUT in releasing this Sustainability Plan that outlines clear targets and engagement with the United Nations' Sustainable Development Goals. Such a stand shows that AUT takes inter- and intra-generational justice seriously.

We look forward to working together to create this thriving future.

Sincerely,

The growing movement of passionate sustainability advocates at AUT,
Students for Sustainability.

3. SUMMARY OF TARGETS TO 2025

THEME 1

CREATING EXCEPTIONAL LEARNING EXPERIENCES

- Increasing number of students will have access to majors, minors or papers with a sustainability orientation
- All students will have the opportunity to work on an interdisciplinary project that encompasses the concepts of wellbeing, futures-thinking, and connectivity

THEME 2

DISCOVERY AND APPLICATION OF KNOWLEDGE FOR WELLBEING AND PROSPERITY

- Providing internal funding mechanisms which support research projects that advance knowledge and its application to sustainability
- Increasing numbers of peer reviewed research outputs that contribute to the United Nations' SDGs

THEME 3

RESPONDING TO OUR PLACE IN THE WORLD

- Establishing partnerships with external organisations based on working together towards the United Nations' SDGs
- Working towards becoming a Fairtrade registered organisation

THEME 4

BUILDING OUR POSITION AS NEW ZEALAND'S UNIVERSITY OF TECHNOLOGY

- Generating sustainability research projects across AUT that attract external financial support
- Demonstrating innovation in sustainability professional practice in curriculum and our research

THEME 5

BEING A PLACE WHERE PEOPLE LOVE TO WORK AND LEARN

- Moving towards net zero greenhouse gas emissions in a manner consistent with New Zealand's national and international commitments
- Reducing water usage on an annual basis
- Reducing emissions from travel
- Preferring indigenous planting, where appropriate
- Moving towards zero waste in line with Auckland Council's targets and relevant national initiatives
- All new buildings meeting AUT's green building standards
- Using green supply chains, including locally sourced produce and materials
- Annual reporting on progress towards greater sustainability in all areas of the Sustainability Roadmap

4. THEME 1: CREATING EXCEPTIONAL LEARNING EXPERIENCES

'Ki te kai ki te inu Ngā Wai o Horotiu' **Drink the waters of Horotiu**

Ki te kai ki te inu Ngā Wai o Horotiu uses water as a metaphor for knowledge and as such we must consume knowledge to understand future challenges. It also acknowledges Ngā Wai o Horotiu (AUT marae) as a domain that addresses these challenges.

In a globalising world of finite resources and unlimited creativity, AUT will play a vital role in preparing students to meet the sustainability challenges of the future. All of our graduates will be inquiring, agile thinkers and communicators with a broad understanding of the complex interactions between natural and human systems.

AUT will look for opportunities to embed sustainability throughout the curricula and will explore the development of co- and extra-curricular initiatives, which will equip our students with the skills, knowledge and experience to become sustainability leaders and change agents. Although sustainability is a global goal, its problems and solutions are situated in local ecosystems and




communities. AUT will increasingly use place- and space-based learning, encouraging our students to see their university campuses and city as a sustainability classroom.

AUT will develop action-oriented cross-university projects to support students and staff to raise their awareness and knowledge of the global and local challenges identified in the United Nations' Sustainable Development Goals. The University will continue to ensure that it increases access to and participation in university education, improves equity, and creates a sense of shared community and belonging where everyone is valued.





OBJECTIVES

- Ensure sustainability concepts are included in the curriculum in ways that support epistemological understanding of the core sustainability values of wellbeing, futures-thinking and connectivity. 
- Ensure all students have learning experiences that maximise their opportunities to graduate as sustainability literate citizens and critical thinkers. 
- Support academic staff to build their sustainability competencies and knowledge in environmental and sustainability education. 

- We will identify our sustainability strengths by mapping our programme and paper offerings to the United Nations' Sustainable Development Goals.
- We will embed sustainability within university structures and programme review processes (eg programme annual reviews).
- We will investigate cross-disciplinary approaches to taught provision such as a generic first-year paper with a content focus on sustainability (as described in the UN Sustainability Goals).
- We will introduce a student and staff award recognising excellence in sustainability practices and in creating action about environmental concerns.

EXAMPLE ACTIONS

- We will facilitate lasting and inclusive, interdisciplinary collaboration through annual learning and teaching symposia, which enable staff to share good practice across AUT and network with practitioners outside their disciplines.
- We will build on and secure resourcing for projects that support students' understanding of sustainability.

TARGETS TO 2025

- Increasing number of students will have access to majors, minors or papers with a sustainability orientation.
- All students will have the opportunity to work on an interdisciplinary project that encompasses the concepts of wellbeing, futures-thinking and connectivity.



Increase the number of majors and/or minors and papers with a sustainability orientation.



5. THEME 2: DISCOVERY AND APPLICATION OF KNOWLEDGE FOR WELLBEING AND PROSPERITY

‘Nanao atu ai ki ngā here Pūrengi’ Grasp the ropes of the canoe

Te Pūrengi is the name of the meeting house of AUT, it is also a name that represents the ropes that bind the double hulled canoe together. As a metaphor the ropes propose that people are also bound together on their journey of discovering new knowledge. The hope is that this journey will lead to wellbeing and prosperity.

Solving the world’s most intransigent problems needs interdisciplinary collaboration. AUT will increasingly ensure its research is project- and mission-led, delivering positive impacts for the wellbeing of people and the planet. AUT’s research and scholarship will make a noticeable, positive contribution to the environmental, social, cultural and economic development and wellbeing of Auckland, New Zealand, and the world. AUT will be recognised as one of the institutions of choice for research on technologies, organisations, processes and policies related to sustainability.




A key focus for AUT will be the integration of teaching with research, ensuring our staff and students are supported to ensure research benefits their communities. We will also seek to ensure students have greater opportunities to undertake research.

We will build on our strengths in areas that advance knowledge on sustainability-related issues (as laid out in the United Nations’ Sustainable Development Goals) and will promote inclusive debate, discovery and positive change.





OBJECTIVES

- Support research, scholarship, and consultancy activities that contribute to or develop knowledge and understanding or its application to sustainability issues. 
- Ensure knowledge transfer and the exchange of expertise developed through research and teaching with AUT's stakeholders. Focus on social utility and long-term impact. 
- We will engage with business, professions, industry and the community to promote the sharing of ideas, expertise, and best practice on sustainability for mutual benefit in ways that are environmentally, socially, culturally and economically responsible. 
- Ensure that research and consultancy projects, methodologies and administrative processes are undertaken in such a way that they minimise adverse impacts. 

sustainability-related knowledge or professional practice, and/or contribute to enabling society, locally or internationally, to meet the goals of sustainability.

- We will conduct discourse on sustainability-related issues that affect the communities we serve.
- We will facilitate research and scholarship on sustainability culture.
- We will increase the number of research projects that employ methods that minimise negative impacts.
- We will complete an analysis of recent research outputs mapped to the Sustainable Development Goals to determine a baseline for future reporting.
- We will include sustainability related topics in our professional development programmes.
- We will organise an annual symposium on research relating to sustainability.

TARGETS TO 2025

- Providing internal funding mechanisms which support research projects that advance knowledge and its application to sustainability.
- Increasing numbers of peer reviewed research outputs that contribute to the United Nations' Sustainable Development Goals.

EXAMPLE ACTIONS

- We will encourage innovative sustainability research, scholarship and consultancy projects involving students. The research will investigate sustainability-related issues, advance



Internal funding made available to support research projects which advance knowledge and its application to sustainability.



6. THEME 3: RESPONDING TO OUR PLACE IN THE WORLD

‘Rangitāmiro ai te kōhao o te ngira’

Weaving together the different strands into the eye of the needle

The message here is collaboration, the weaving and connecting of the different strands together. The eye of the needle represents one common purpose, and as such our commitment to sustainability.

AUT recognises that it can achieve more through partnership with others – Māori, local and national government, business, professions, industry and communities, as well as through our international collaborations. We recognise our role in working for Tāmaki Makaurau Auckland and Aotearoa New Zealand, and our distinct contribution as a university to advance and expand sustainability knowledge. AUT is sought out for the work that we do and for our engagement with the wider community to effect change towards sustainability.

AUT is an active member of the United Nations’ Sustainable Development Solutions Network and contributes to discussion with government, business and communities about how we can collectively further the Sustainable Development Goals. AUT will continue to lead by example through the Principles for Responsible Management Education accreditation, which supports the AUT Business School to transform teaching, research and thought leadership in support of the values of sustainability, responsibility and ethics.

Collaboration is also important within AUT, with key staff from all faculties and divisions and at all levels working together to further our sustainability goals. Where possible, AUT will create educational opportunities on sustainability from its operational activities. Basing our relationships on our values and sustainability concepts will facilitate the culture of innovation and collaboration needed for positive change to occur.

OBJECTIVES

- Work with Māori towards bicultural understandings and responses to the issues of sustainability for Aotearoa New Zealand.  
- Demonstrate AUT’s environmental, social, cultural and economic responsibilities through partnerships, initiatives and activities.  
- Be an effective and strong advocate for sustainability in the communities we serve.   
- We will minimise resource use, minimise the negative impacts of products in terms of pollution and waste, ensure fair terms and ethical labour, and will provide opportunities for small, diverse as well as social enterprises. 
- Establish partnerships with other organisations working towards the UN Sustainable Development Goals and be an active contributor to the Australia, New Zealand, and Pacific Sustainable Development Solutions Network. 

EXAMPLE ACTIONS

- We will support our staff by producing guidelines on how to respond to our place in the world in the context of the UN Sustainable Development Goals.



- We will support AUTSA and student clubs to engage with SDSN Youth, to empower them to contribute to young people's global efforts to create sustainable development solutions.
- We will share space or equipment to encourage collaborative research projects and provide learning opportunities.
- We will facilitate opportunities for students within programmes and/or with industry to undertake co-ops aligned with our sustainability objectives and the UN Sustainable Development Goals.
- We will provide more opportunities for sustainability focused students to do their co-ops at the university, in areas aligned to the UN Sustainable Development Goals.
- We will proactively partner with businesses already committed to sustainability to assist and learn.
- We will develop and implement an AUT-wide staff and student volunteering programme.
- We will continue with AUT's outreach programmes and activities, and widen participation and promote inclusion within Auckland.
- We will develop guidelines for staff donations and giving to external stakeholders.
- We will review procurement policies and procedures to ensure they support sustainable businesses and products and thereby green supply chains.
- We will increase visibility of sustainability work and challenges with a Sustainability Communications Plan.
- We will build capacity around Ngā Wai o Horotiu Marae (AUT) to become a flagship of sustainability at AUT in both practice and education.
- We will emplace an AUT-wide staff and student-volunteering programme.

TARGETS TO 2025

- Establishing partnerships with external organisations based on working together towards the UN Sustainable Development Goals.
- Working towards AUT becoming a Fairtrade registered organisation.



Staff and student
volunteering
programme.

Review and update
procurement to support
sustainable businesses,
products and green supply
chains



7. THEME 4: BUILDING OUR POSITION AS NEW ZEALAND'S UNIVERSITY OF TECHNOLOGY

'Ka takakawehia te ara poutama'

Traverse the path of excellence

Taken from the tukutuku panel design poutama (levels of success) this section of the waiata sings about achieving at the highest level.

Increasing sustainability as a university of technology means a multidisciplinary approach to complex problems. We recognise ecosystems and humanity are affected by multiple developments and their interactions and that these require responses adequate to the interconnectivity of the phenomena. Some topics will require new conceptual frameworks or action-oriented research with deeper understanding of end-users, including policymakers, the private sector and civil society. Our answers will not only be of an explanatory nature, but will also lead to actions, policies, processes and products generating positive change.





We will strive to promote dialogue between different disciplines, discourses and methods, both within the University and in our external partnerships. We will champion positive change based on a strong scientific underpinning and forge alliances with likeminded organisations to achieve maximum impact.



**SUSTAINABILITY
CHALLENGES**



OBJECTIVES

- Through action-oriented research and a focus on end-users, focus on innovation and application and contribute to policies, processes and products that generate positive change. 
- Work with industry and professions to guarantee the greatest chance of success.  
- Develop and implement solutions as exemplars of technological excellence in terms of reliability and efficiency. 

EXAMPLE ACTIONS

- We will conduct an extensive consultation round to identify at least one priority sustainability project based on a combination of UN Sustainable Development Goals that will create international publicity. We will scope a project that utilises existing resources, eg seven commercial AUT kitchens, to address a current problem like climate change, food security, obesity and hunger.
- We will develop Challenges to catalyse opportunities for collaborations in exploratory change-making processes.

They will be:

- **Generation Change Challenge:** In this Challenge, AUT students lead a range of events that catalyse, model or enact change, eg Sustainability Week
- **Equity Challenge:** this Challenge focuses on creating a space for actions and conversations around equity
- **Carbon Challenge:** this Challenge creates projects for AUT teaching, research and operations innovations focused on post-carbon futures
- **Biodiversity Challenge:** this Challenge creates a range of biodiversity-focused projects on campus and within Auckland City
- We will run and fund an annual university wide innovation competition focused on converting an existing process to be carbon neutral.

TARGETS TO 2025

- Generating sustainability research projects across AUT that attract external financial support.
- Demonstrating innovation in sustainability professional practice within the curriculum and our research.



8.THEME 5: BEING A PLACE WHERE PEOPLE LOVE TO WORK AND LEARN

‘Ko te reo pōwhiri, ko te reo karanga, ko te mātāpuna o te kete Aronui, tau, tau, tau ana e!’







Heed the call of welcome, to the source of knowledge, strive and achieve!

Te Kete Aronui, the basket of knowledge refers to AUT, which captures the essence of this institution. This statement is an invitation for all people to work, learn and achieve at AUT. To bring AUT staff and students to an empowering experience of sustainability in tertiary education.

AUT recognises that climate action (SDG 13) is one of the critical issues facing humanity and has set ambitious goals to reduce its carbon emissions. AUT has a common responsibility with other large organisations to improve the management of its operations in terms of energy use and water, waste, and biodiversity, and to ensure our policies and procedures support that. But it is also responsible for providing a on-campus learning environment that empowers our student and staff community to contribute positively – individually and collectively – to greater sustainability. AUT’s student experience will be enhanced as a result of the quality of our campuses, and our property, land, buildings and facilities will be exemplars in ecological and social performance, including biodiversity.

AUT will encourage staff and student engagement by setting challenging goals that will engage and inspire innovative and transformational solutions.

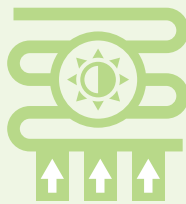
OBJECTIVES

- We will ensure our built environment reflects best practice and encourage the use of our campuses as living laboratories for sustainability learning, teaching, research and action.  
- We will build on current efforts to reduce, reuse and recycle, including through sustainable travel and reduced consumption of non-renewable resources 
- We will embed sustainability into university processes and systems and manage facilities and services efficiently, and in a customer-centric manner. 
- We will ensure healthy, safe, accessible and inclusive environments for all AUT stakeholders, creating a sense of shared community and belonging where everyone is valued. 
- We will ensure that understanding of and expertise in sustainability is developed in our staff. 

8.1 LOW CARBON AND ENERGY (SDG 7 & 13)

Climate change is described as one of the biggest issues facing mankind today. Human activity, in particular the burning of fossil fuels has increased the levels of CO₂ and methane in the atmosphere causing global warming and climate change. Limiting the effects of global warming will require significant reductions in GHG emissions and increased carbon sequestration.

The University has set ambitious goals to reduce its emissions. Data shows that in 2016, 41% of the University's emissions were from air travel. A further 48.7% was from energy (gas, electricity and transmission losses) and the rest was from fuel, refrigerants and waste (10.3%). This generated 6,618 tonnes of CO₂. Priority focus areas to reduce these effects are reduced air travel, energy efficiency, onsite energy generation, offsite purchase of green energy, to reduce use of fossil fuels and carbon sequestration.



EXAMPLE ACTION

- Develop and implement a Low Carbon/Energy Efficiency Plan
- Monitor and report energy intensity
- Strengthen relationship with University researchers to research and implement low carbon alternatives
- Work with EECA to continue to improve energy efficiency and reduce gas usage
- Gain recognition for work done through entering awards

TARGET TO 2025

- Moving towards net zero greenhouse gas emissions in a manner consistent with New Zealand's national and international commitments

8.2 THE VALUE OF WATER (SDG 6 & SDG 14)

Water is an essential resource for our food, biodiversity, culture, recreational activities and wellbeing. However, decreased water quality is a national concern with some of the greatest pressures coming from contamination (especially nitrogen and phosphorous in rural areas), heavy metals (from roads and roofs in urban area), sedimentation as well as water usage through demanding agricultural and industrial processes. This is affecting the quality and biodiversity of our streams, rivers and marine environment. The University is committed to protecting our water by conserving, harvesting, reducing contamination and improving monitoring. In 2016, AUT used 87,960kL of water of which 98.3% was sourced from the mains water supply. A small percentage of our water is derived from rainwater tanks and borehole water. Water is used for our buildings including scientific laboratories and to maintain our grounds.

EXAMPLE ACTION

- Implement a water management plan for each campus
- Increase onsite rainwater capture, recycling and reuse technologies
- Increase water treatment devices to remove contamination
- Increase efficiency through staff, student and contractor engagement
- Monitor and report on water quality of surrounding water bodies and work with mana whenua to understand what AUT can do to enhance the mauri of associated water systems



TARGET TO 2025

- Reducing water usage on an annual basis.

8.3 LOW CARBON TRAVEL (SDG11 & 13)

The University has 26,000 students and about 2,500 staff who commute to our campuses. In addition, staff and students move between sites for lectures or other university activities. The draft low carbon travel plan encourages sustainable options such as walking, cycling, public transport, shuttle bus and carpooling. In addition, the University operates a fleet of vehicles and provides a shuttle bus service between campuses. These are being reviewed to move away from fossil fuel dependency.

EXAMPLE ACTION

- Implement and socialise the Sustainable Travel Plan
- Increase staff and student uptake of sustainable transport (ie not private motor vehicle) to university
- Review travel subsidies to staff
- Business case for electrification of vehicle fleet
- Replace a passenger car with an EV and socialise change
- Reducing emissions from the University's passenger car fleet
- Prioritise walking and cycling parks, security and end of trip facilities
- Have an active sustainable travel campaign
- Monitor and report on key indicators within the Travel Plan
- Investigate opportunities to reduce air travel through teleconferencing, or other options
- Measureable annual improvements to end of trip facilities on all campuses



TARGET TO 2025

- Reducing emissions from travel

8.4 BIODIVERSITY (SDG 15)

New Zealand has a unique biodiversity, which provides a distinct character and sense of place to those living here. However, our ecosystems are increasingly dominated by introduced species leading to homogeneity, which significantly diminishes our diverse biological systems. Creating campuses where students can experience our biota, and increase their connectedness and wellbeing with the New Zealand environment is a key driver for the University. AUT manages three campuses, which span 27 hectares with variable levels of native plantings. The University aims to create a place where native biodiversity thrives and staff, students and wider community engage, value, and learn about our natural environment.



EXAMPLE ACTION

- Establish baseline data for all three campuses
- Increase biodiversity via campus specific biodiversity planting plans
- Restrict all new planting, other than food plants, to indigenous species
- Develop a pest management plan
- Review chemicals used in landscape
- Work with researchers to improve biodiversity management practices
- Include Mātauranga Māori into above plans and actions
- Pilot spray free weed management at the North Campus

TARGET TO 2025

- Preferring indigenous planting, where appropriate

8.5 WASTE (SDG12)

Waste is a symptom of a broken system – a linear ‘take, make and dispose’ extractive model instead of a circular economy, which is restorative and regenerative by design. AUT is committed to reducing the amount of waste it generates both through its operations as well as through the construction and refurbishment of its buildings.

In 2016, AUT created 428 tonnes of waste through its operations and recycled 136 tonnes of commingled recycling, paper and other materials, composted 18.73 tonnes of organic material and recycled 5.34 tonnes of other products. We do not have complete data on the amount of construction waste generated onsite.

EXAMPLE ACTION

- Generate accurate data on all waste streams
- Document and expand the re-use programme
- Expand the organic waste collections to the School of Hospitality and Tourism
- Report waste to all key stakeholders across the campus
- Ban single use plastics on campus
- Reduce waste per person



TARGET TO 2025

- Moving towards zero waste in line with Auckland Council’s targets and relevant national initiatives

8.6 SUSTAINABLE BUILDINGS (SDG11)

The built environment uses 40% of the world’s energy, emits 30% of CO2 and uses 14% of the world’s drinking water. There are huge opportunities in New Zealand to improve our building stock, air quality, energy use and space utilisation.

AUT has recently built several new buildings at the City and South campuses, incorporating sustainable feature elements such as wood into the main structure of WG, and double glazing, daylight features and underfloor, displacement ventilation at the new MH building.



EXAMPLE ACTION

- Gain NabersNZ rating for the WO and WZ buildings
- Formulate AUT’s Green Building Standard for new buildings
- Apply zero emissions-ready approach to all campus development projects
- LCA comparison of AUT’s three newest buildings
- Conduct a greenstar office interiors five-star rating for a refit project
- Link sustainable building plan to Auckland Council’s low carbon plan
- Increase the sourcing of building materials from local suppliers
- Increase numbers of staff understand and apply Life Cycle Assessments

TARGET TO 2025

- All new buildings meet AUT’s green building standards

8.7 SUSTAINABLE ICT (SDG7, 12)

Carbon emissions from the ICT sector are on a par with the aviation industry. A large portion of these impacts is from telecom networks, mobile phones, computers and data centres. In addition, fast product cycles create large volumes of high-value, wasted materials, which are toxic in the environment. ICT has an enormous role to play not only in reducing its environmental impacts but also in assisting other industries to reduce theirs such as using teleconferencing facilities instead of travelling and improved logistics services.

AUT undertakes regular independent benchmarking exercises. The current rating system, including the Electronic Product Environment Assessment Tool (EPEAT), used by the Australasian universities had lost relevance, with more and more organisations achieving a score of 100%. ICT have now switched to using the comprehensive cross-industry benchmark run by Fujitsu. It compares five areas of sustainability measures: Enablement, Metrics, Lifecycle, End User and Enterprise. Fujitsu benchmarked AUT for the first time in 2018 where the University scored 55% overall. Scores of 80% and above are considered best practice. There are clear opportunities for improvement that ICT will pursue over the coming years.



EXAMPLE ACTION

- Sustainability incorporated into procurement process
- Audit organisations responsible for AUTs e-waste
- Maintain 100% score in EPEAT rating tool
- Increasing server virtualisation

TARGET TO 2025

- Reducing the carbon footprint of our ICT usage

8.8 SUSTAINABLE, HEALTHY FOODS AND HEALTHY PEOPLE (SDG 1, 2 & 3)

We live in a world where about a third of all food produced is wasted, where 700 million people suffer from hunger but 200 million people are over-weight or obese and where 50% of plant protein grown is fed to animals. A sustainable food system is one, which places health of people and the planet at its heart. It is one where the fertility of soil is maintained, the availability of water is enhanced and protected, biodiversity is protected, the food is affordable and healthy, and energy use, waste, greenhouse gas emissions are within the capacity for the earth to absorb.

AUT runs five cafés, caters for multiple events on the campuses and manages two food courts, which are serviced by external providers. The University currently diverts food waste from the cafés and some of the teaching kitchens to organic waste. Cafés are members of the Conscious Consumer programme, which includes minimising packaging, caring for workers, protecting ecosystems, composting, vegan food options, buying local and Fairtrade. In addition, the University supports beehives, which will be added to the North and South campuses in 2018.

Staff and students have indicated a strong interest in food and recent student projects include a design project on urban food walls, creating campuses that provide food sources for bees, piloting free-range eggs in the cafés and tutors advocating for healthier options in cafés.



EXAMPLE ACTION

- Minimise waste from events on our campuses
- Identify local growers as suppliers of produce for AUT
- Develop procurement criteria to support sustainable food suppliers
- Supporting plastic-free initiatives
- Increasing plant-based meals as a proportion of the food offered on campus

TARGET TO 2025

- Using green supply chains, including locally sourced produce and materials

8.9 SUSTAINABLE POLICIES, PROCEDURES AND SYSTEMS

AUT will build sustainability into University-wide processes and management systems, ensuring they remain strategically important and embedded into everyday institutional practices for long-term benefit. Staff will be encouraged and rewarded for their efforts in relation to sustainability and AUT will actively build sustainability-related capabilities in its staff.

EXAMPLE ACTION

- Audit current policies and practices to ensure they support AUT's sustainability objectives
- Monitor progress and performance against the objectives of our Sustainability Plan
- Introduce a sustainability recognition award for individuals or groups of staff innovators and change agents as well as students
- Promotion of sustainability in staff induction and training programmes and through other opportunities to raise awareness
- Sustainability literacy is promoted at all levels of the University
- Auditing AUT's policies to ensure support for AUT's sustainability objectives
- Organising regular presentation/webinar series on sustainability topics at AUT
- Incorporating sustainability principles, aspirations, and responsibilities within position descriptions and annual development planning



TARGET TO 2025

- Annual reporting on progress towards greater sustainability in all areas of the Sustainability Roadmap





Auckland University of Technology
Private Bag 92006
Auckland 1142
www.aut.ac.nz

CITY CAMPUS
55 Wellesley Street East, Auckland Central

NORTH CAMPUS
90 Akoranga Drive, Northcote, Auckland

SOUTH CAMPUS
640 Great South Road, Manukau, Auckland

Connect with us now:



@autuni

#autuni